



(highlight:at-the-glance)

IBU | Youth & Junior World Championship, Lenzerheide, Switzerland

SUBTILE PRESENCE UP TO THE SMALLEST DETAIL

GENEZES 3910RS

MODUL

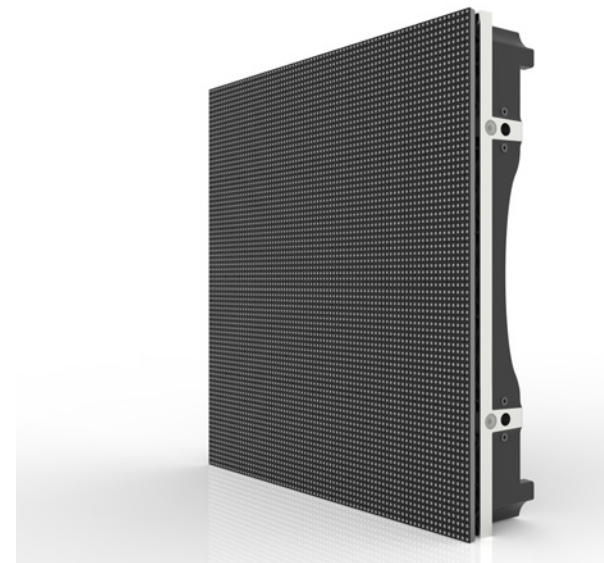
Application	outdoor (indoor) fix installation, rental	Operation in outdoor, high humidity; large temperature differences (ice rinks and swimming pools, winter sports arenas)
Technology	Intelligent active module technology	ultrafast image build-up, no ghost shadows effect by LED afterglow
Resolution	3.91 mm pixel pitch, symmetrical	LED type: ReStar RS-C1921MBAR, blackface high uniforming, customized selected batch
Body Size & Material	500 x 500 mm 4.85kg	alu-magnesium-alloy, die casting, lightweight
PCB Material & Process	TG 170, gold coated, PCB-A random P&P for LED 3D-SPI, vacuum PCB fixture during PCB-A, EOI	LED with flying head underfill glue technology, supports long life, minimized failure rate, high flatness for large viewing angle
Brightness	5000 nits (blackface)	after calibration, High Current PowerSupply (50A/0.25m ²)
Viewing Angle	> 170° / 160° (H / V) with high flatness (for wide viewing angle viewed over the screen surface)	extremely high visibility of side view of LED-system from the audience and TV cam's
Body Structure	closed, fanless system with dust/water protection	IP67 standard on front- and rear-side , dust- & water-protection
Gray Scale	22 bit / PWM driver MBI 5251	hard- & software-based technology for natural color, high contrast
Scan Rate	1/8	ultrafast image build-up without ghost shadows effect
Sport Photographer	1 : 3200 / sec, shutter speeds	no missing image information (black lines)
Broadcast Standards	50Hz/60Hz Signal Frequenz / 6900 Hz refresh rate	50fps national broadcast, 60fps international broadcast flicker free up to hyper slow-motion cam's
Front Mask	2 components front shader EN 13823 EN ISO 1716 (SMOGRA, FIGRA, THR, TSP tested)	flatness guarantee up to 80 ° C, UV-protected direct sunlight

PANEL

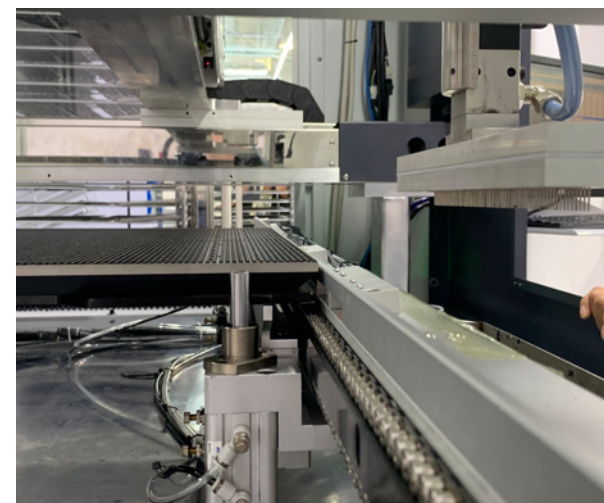
Service	front & back maintenance	hot plug maintenance, hybrid power-/date cable technology
Alignment	cube with curve of 90° (5x500mm) modul screen: horizontal, vertical	cube: self-supporting mounting system screen & fascia: wall mounting system
Frame	2.5kg 500 x 500 x (75 mm frame + 19.8mm modul)	29.6kg/m ² panel weight complete alu-magnesium-alloy, die casting
Corner Frame	seamless corner structure	500x500 frame: 8 frame, 90° radius 2.4m
Gates (Perimeter)	access- & exit-gate (optional)	both way open: to the field, from the field away

SYSTEM

LED Controller	full redundant system with UPS, 4K	HDMI / DP input, optical single-mode channel output
PlayOut Media System	SLAM.SYSTEMS modular and redundant PlayOut System, control, administration playback (optional)	graphic-interface for free scalable scoreboard, liveTV, advertising, use for simple, single application up to complete stadium solution
Redundancy	Data signal for redundant operation from media PlayOut-, via the controller to the LED-system	Unique: ring circuit technology enables power redundancy in LED systems for the first time
Power Consumption green efficiency	106.2W/m ²	watt by 225V/50Hz (stand:by)
	0.79A /m ² current average	power consumption pays off for IceHockey Match with floodlights, a mix of animated and static content during the game
	400W/m ²	current max. full white, full brightness
Lab	CE, RoHS, EMC class A (high-level)	system power-on by cascaded & delayed main power distribution
Sustainability compliance	swiss warranty	In-house development & production for a long lifetime with guaranteed spare parts supply through selected components, inexpensive maintenance , 20 years experience in LED technology



all magnesium di-cast 500x500mm LED-panel & frame



gluing process with underfill glue and silicone glue for IP67



technical changes reserved – ©2023