

Finest details and contours, high contrast, a three-dimensional, lively image are the characteristics of our high-end LED Cube.



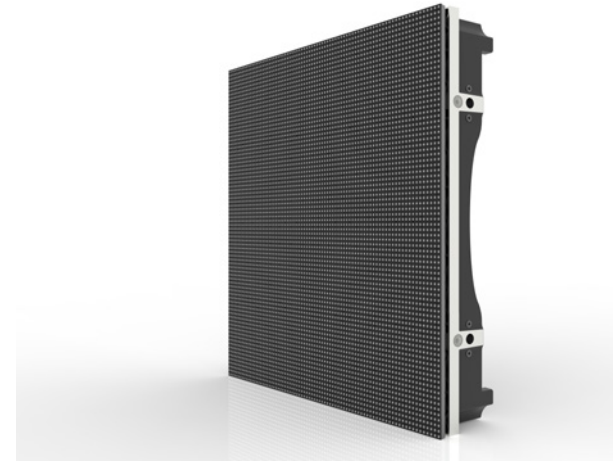
(highlight:at-the-glance)

EHC Basel: Seamless LED-Cube (88m²) with Media Playback & Scoreboard by SLAM.SYSTEMS

ACTIVE & MODULR LED TECHNOLOGY

ALEZEN 625HRS

Application	indoor (outdoor) fix installation, rental	Operation in high humidity; large temperature differences (ice rinks and swimming pools, winter sports arenas)
Technology	Intelligent active module technology	ultrafast image build-up, no ghost shadows effect by LED afterglow
Resolution	6.25 mm pixel pitch, symmetrical	LED type: ReeStar RS-C1921MBAR, blackface high uniforming, customized selected batch
Size & Material	500 x 500 mm 4.58kg	alu-magnesium-alloy, die casting, lightweight
PCB Material & Process	TG 170, gold coated, PCB-A random P&P for LED 3D-SPI, vacuum PCB fixture during PCB-A, EOI	LED with flying head underfill glue technology, supports long life, minimized failure rate, high flatness for large viewing angle
Brightness	2200 nits (blackface)	after calibration, high current power supply (35A/0.25m ²)
Viewing Angle	> 170° with high flatness (for wide viewing angle, viewed over the screen surface)	extremely high visibility of side view of LED-system from the audience and TV cam's
Body Structure	closed, fanless system with dust/water protection of IP67 front and rear	design for longlife with selected components, optimized heat absorption, fast lock system
Redundancy	Data signal for redundant operation from media PlayOut-, via the controller to the LED-system	unique: ring circuit technology enables power redundancy in LED systems for the first time and support to simply system power off
Gray Scale	22 bit / PWM driver (SUM 2035)	hard- & software-based technology for natural color, high contrast
Scan Rate	1/4	ultrafast image build-up without ghost shadows effect
Sport Photographer	1 : 3200 / sec, shutter speeds	no missing image information (black lines)
Broadcast Standards	refresh rate 4'850Hz (50fps), 4'860Hz (60fps)	50fps national broadcast, 60fps international broadcast flicker free up to hyper slow-motion cam's
Front Mask	front mask with high flatness	Test by SGS lab:EN 13823 EN ISO 1716 (SMOGRA, FIGRA, THR, TSP)
Service	front & back maintenance	hot plug maintenance, hybrid power-/date cable technology
Alignment	cube with curve of 90° (5x500mm) modul screen: horizontal, vertical	cube: self-supporting mounting system screen & fascia: wall mounting system
Frame	2.5kg 500 x 500 x (75 mm frame + 19.8mm modul)	magnesium-aluminium alloy, die-casting, durable, lightweight 29.3kg/m ² complete panel weight, include interconnect cable
Corner Frame	seamless corner structure	500x500 frame: 4 frame, 90° radius 1.2m 5 frame, 90° radius 1.5m
LED Controller	full redundant 4K system with UPS	HDMI / DP input, optical single-mode channel output
PlayOut Media System	SLAM.SYSTEMS modular and redundant PlayOut System, control, administration playback (optional)	graphic-interface for free scalable scoreboard, liveTV, advertising, use for simple, single application up to complete stadium solution
Redundancy	Data signal for redundant operation from media PlayOut-, via the controller to the LED-system 51.3W/m ²	Unique: ring circuit technology enables power redundancy in LED systems for the first time stand:by mode in watt by 225V/50Hz
Power Consumption green efficiency	155W/m ² 229.5W/m ²	average power consumption: 88m ² LED cube in an ice arena with floodlights and a mix of animated/static content during the game maximum power consumption by full white and full brightness
Lab	CE, RoHS, EMC class A (high-level)	current inrush limiting for system power soft-start
Sustainability compliance	swiss warranty	In-house development & production for a long lifetime with guaranteed spare parts supply through selected components, inexpensive maintenance , 20 years experience in LED technology



seamless fix installation cube 4x 90° r=1.2m | 5x 90° r= 1.5m



technical changes reserved – ©2023